



GAT MONTHLY MEMBERSHIP PROGRESS REPORT

Results as of: 6/30/2023

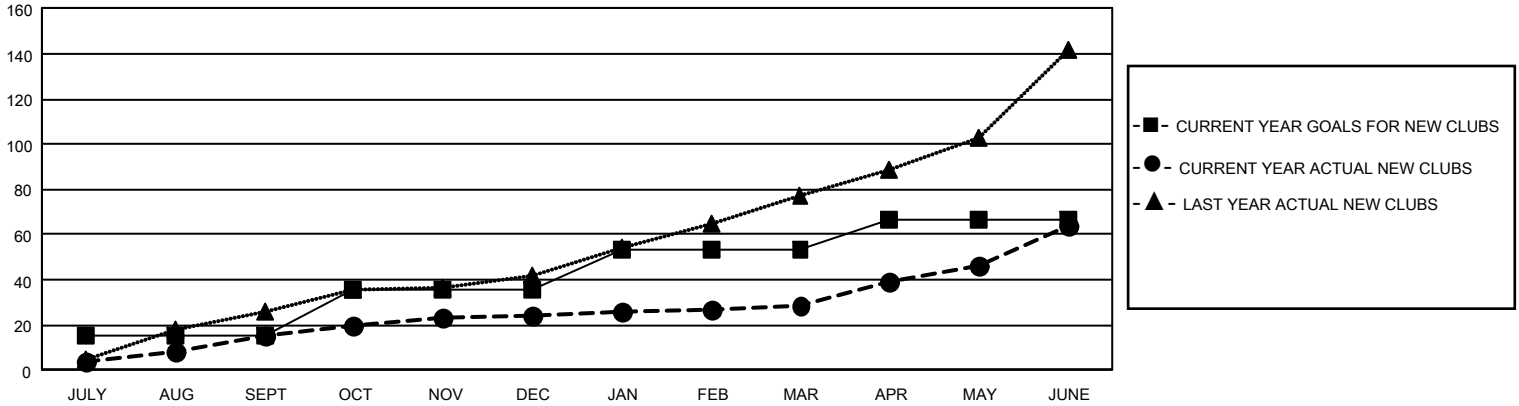
GAT Constitutional Area 5 - English Speaking Areas

REPORT DOES NOT INCLUDE CLUBS IN UNDISTRICTED AREAS.

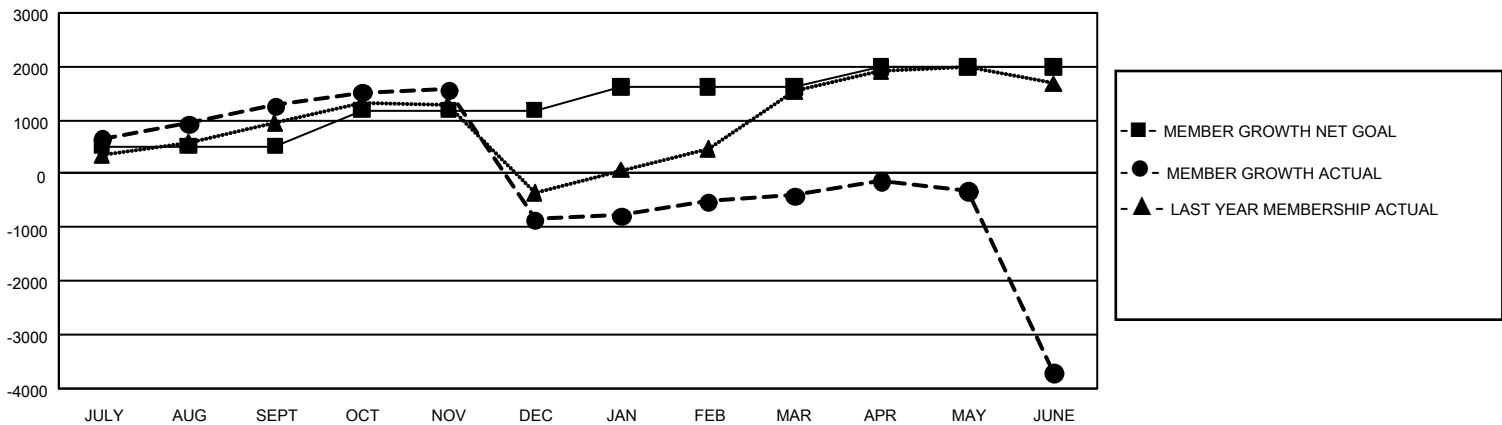
Clubs			
RESULTS FOR 2022-2023			
QUARTER	NEW CLUB GOAL	NEW CLUBS	DROPPED CLUBS
JULY/AUG/SEPT	45	15	11
OCT/NOV/DEC	63	9	46
JAN/FEB/MAR	51	5	14
APR/MAY/JUNE	42	35	45

Members			
RESULTS FOR 2022-2023			
QUARTER	MEMBER GROWTH NET GOAL	MEMBER GROWTH ACTUAL	DROPPED MEMBERS ACTUAL (including transfers)
JULY/AUG/SEPT	512	2,750	1,195
OCT/NOV/DEC	675	1,192	3,242
JAN/FEB/MAR	430	1,578	891
APR/MAY/JUNE	377	2,330	5,292

GOALS AND ACTUAL NEW CLUBS CUMULATIVE



GOALS AND ACTUAL MEMBERS CUMULATIVE



DROPPED CLUBS: 116	897 CLUBS OF 1,389 ADDED 1 OR MORE NEW MEMBERS	GENDER DISTRIBUTION	
		MALE 19,959 (54.58%)	FEMALE 16,550 (45.26%)
DROPPED MEMBERS		NON BINARY 0 (0.00%)	PREFER NOT TO ANSWER 57 (0.16%)
DECEASED 191	CLICK HERE FOR CUMULATIVE MEMBERSHIP DATA	TOTAL FAMILY UNIT MEMBERS 8,833	
CLUB CANCELLED 2,587		FAMILY MEMBERS PAYING HALF DUES 5,400	
OTHER 7,842			
TOTAL 10,620			